

2024 年度  
東京都立大学大学院 都市環境科学研究科  
都市政策科学域 選抜試験（夏季）  
博士前期課程（一般・社会人）（4月入学）

科目 <小論文>  
時間 9 : 0 0 ~ 1 1 : 0 0

注意事項：

- ①解答は、配布された答案用紙に行うこと。不足した場合は、手を挙げて申し出て下さい。
- ②答案用紙の「学修番号」欄に「受験番号」を、「氏名」欄に「氏名」を記入してください。
- ③解答は、問題に指示がない限り日本語で行うこと。
- ④監督者の指示があるまで問題冊子は開かないでください（その他、監督者の指示に従うこと）。

受験番号	一般・社会人	氏名
------	--------	----

下記の文章は、2022年5月に公表された IPCC AR6 WGII のレポートからの引用である。文章を読み、(1)と(2)の設問に答えなさい。なお解答は日本語または英語とする／The following text is quoted from the IPCC AR6 WGII report published in May 2022. Read the text and answer questions (1) and (2). Answers should be in Japanese or English.

This report has a strong focus on the interactions among the coupled systems climate, ecosystems (including their biodiversity) and human society. These interactions are the basis of emerging risks from climate change, ecosystem degradation and biodiversity loss and, at the same time, offer opportunities for the future.

Climate resilient development thereby supporting human, ecosystem and planetary health, as well as human well-being, requires society and ecosystems to move over to a more resilient state. The recognition of climate risks can strengthen adaptation and mitigation actions and transitions that reduce risks. Taking action is enabled by governance, finance, knowledge and capacity building, technology and catalyzing conditions. Transformation entails system transitions strengthening the resilience of ecosystems and society.

Climate resilient development integrates adaptation measures and their enabling conditions with mitigation to advance sustainable development for all. Climate resilient development involves questions of equity and system transitions in land, ocean and ecosystems; urban and infrastructure; energy; industry; and society and includes adaptations for human, ecosystem and planetary health.

Interactions between changing urban form, exposure and vulnerability can create climate change-induced risks and losses for cities and settlements. However, the global trend of urbanization also offers a critical opportunity in the near-term, to advance climate resilient development. Integrated, inclusive planning and investment in everyday decision-making about urban infrastructure, including social, ecological and grey/physical infrastructures, can significantly increase the adaptive capacity of urban and rural settlements. Equitable outcomes contributes to multiple benefits for health and well-being and ecosystem services, including for Indigenous Peoples, marginalized and vulnerable communities. Climate resilient development in urban areas also supports adaptive capacity in more rural places through maintaining peri-urban supply chains of goods and services and financial flows. Coastal cities and settlements play an especially important role in advancing climate resilient development.

注意：次ページにも問題があります

## Glossaries

- Ecosystem health: a metaphor used to describe the condition of an ecosystem, by analogy with human health. Note that there is no universally accepted benchmark for a healthy ecosystem. Rather, the apparent health status of an ecosystem is judged on the ecosystem's resilience to change, with details depending upon which metrics (such as species richness and abundance) are employed in judging it and which societal aspirations are driving the assessment.
- Planetary health: a concept based on the understanding that human health and human civilisation depend on ecosystem health and the wise stewardship of ecosystems.

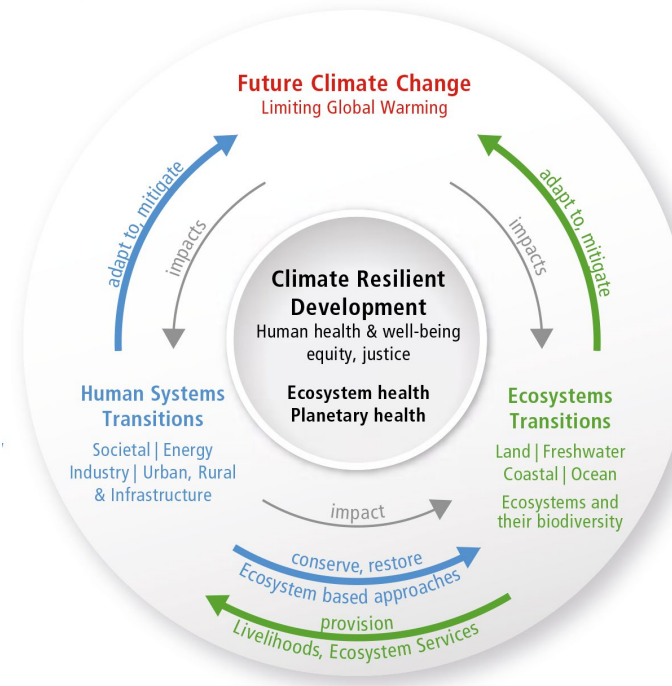


Figure 1 Climate Resilient Development

(1) Climate resilient development について説明しなさい / Describe climate resilient development.

(2) 下線部 climate change-induced risks and losses for cities and settlements として考えられる、具体的な現象を示した上で、その解決策について論じなさい。自分の専門分野に引きつけて論じてよい / Please describe the specific phenomena you can think of as "climate change-induced risks and losses for cities and settlements", and then discuss possible solutions. You may discuss the subject with reference to your expertise.